

MONTHLY MEMBERSHIP PROGRESS REPORT

District 27 D1

Results as of: 6/30/2020

GMT:

LOCATION WISCONSIN

GMT CA

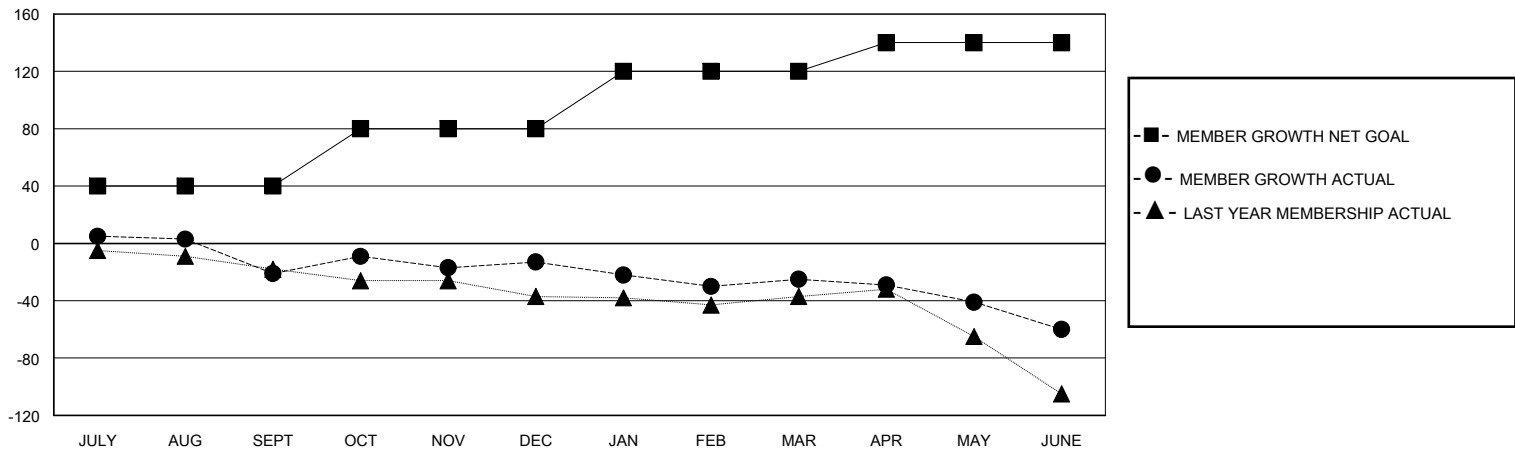
| Clubs | | | |
|-----------------------|---------------|-----------|---------------|
| RESULTS FOR 2019-2020 | | | |
| QUARTER | NEW CLUB GOAL | NEW CLUBS | DROPPED CLUBS |
| JULY/AUG/SEPT | 0 | 0 | 0 |
| OCT/NOV/DEC | 0 | 0 | 0 |
| JAN/FEB/MAR | 1 | 0 | 0 |
| APR/MAY/JUNE | 0 | 0 | 0 |

| Members | | | |
|-----------------------|------------------------|----------------------|----------------------------------------------|
| RESULTS FOR 2019-2020 | | | |
| QUARTER | MEMBER GROWTH NET GOAL | MEMBER GROWTH ACTUAL | DROPPED MEMBERS ACTUAL (including transfers) |
| JULY/AUG/SEPT | 40 | 43 | 60 |
| OCT/NOV/DEC | 40 | 47 | 39 |
| JAN/FEB/MAR | 40 | 31 | 42 |
| APR/MAY/JUNE | 20 | 19 | 53 |

GOALS AND ACTUAL NEW CLUBS CUMULATIVE



GOALS AND ACTUAL MEMBERS CUMULATIVE



| | | |
|-------------------------------------------------------------------------------------|-----------------------------------------------------------|--------------------------------------------------------------------------|
| DROPPED CLUBS: 0 | 45 CLUBS OF 58 ADDED 1 OR MORE NEW MEMBERS | GENDER DISTRIBUTION MALE 1,546 (73.41%) FEMALE 560 (26.59%) |
| DROPPED MEMBERS DECEASED 22 CLUB CANCELLED 0 OTHER 172 TOTAL 194 | CLICK HERE FOR CUMULATIVE MEMBERSHIP DATA | TOTAL FAMILY UNIT MEMBERS 439 FAMILY MEMBERS PAYING HALF DUES 221 |